



KOREAN SOCIETY OF
SURGICAL ONCOLOGY

SISSO 2015

Seoul International Symposium of Surgical Oncology 2015

Excellency and Harmony for Cancer Patients

February 27(Fri)~28(Sat), 2015

W Seoul-Walkerhill, Seoul, Korea

www.sisso2015.org

Invitation

Dear Colleagues,

On behalf of the Organizing Committee of SISSO2015, we are much delighted and privileged to invite you to the Seoul International Symposium of Surgical Oncology 2015 (SISSO2015) which will be held from February 27 to 28, 2015 in Seoul, Korea.

The KSSO has been established by the surgical oncologists in 2005 to actively provide reports of clinical studies on tumors as a way to share knowledge between members and to develop clinical studies on tumors by engaging in exchange with other relevant societies at home and abroad in order to pursue the development of clinical studies on the efficient diagnosis, treatment, and prevention of tumors.

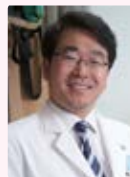
Our Society will be having the annual international symposium "SISSO2015" where we'd like to share cutting edge knowledge of surgical oncology and collaborate on global studies in this field. And our main theme of the symposium is "Excellency and Harmony for Cancer Patients".

We are looking forward to your continued cooperation and meeting all of you in the dynamic and beautiful city of Seoul in 2015!

Sincerely,



Ho-Kyung Chun, M.D., Ph.D.
President,
Organizing Committee of SISSO2015



Ho-Seong Han, M.D., Ph.D.
Chairman,
Organizing Committee of SISSO2015

Organizing Committee

| | | |
|-------------------|----------------|---|
| President | Ho-Kyung Chun | Sungkyunkwan University School of Medicine |
| Vice President | Dong Wook Choi | Sungkyunkwan University School of Medicine |
| | Dong-Young Noh | Seoul National University College of Medicine |
| | Hungdai Kim | Sungkyunkwan University School of Medicine |
| Chairman | Ho-Seong Han | Seoul National University College of Medicine |
| Secretary General | Do Joong Park | Seoul National University College of Medicine |

Scientific Committee

| | | |
|------------------------------|-----------------|--|
| Chairman | Han-Kwang Yang | Seoul National University College of Medicine |
| Assistant Secretary | Hyeong-Gon Moon | Seoul National University College of Medicine |
| Stomach | Jae-Ho Cheong | Yonsei University College of Medicine |
| | Moon-Won Yoo | University of Ulsan College of Medicine |
| | Sang-Ho Jeong | Gyeongsang National University Graduate School of Medicine |
| Colorectum | In Kyu Lee | School of Medicine, The Catholic University of Korea |
| | Jung Wook Huh | Sungkyunkwan University School of Medicine |
| | Sung-Bum Kang | Seoul National University College of Medicine |
| Hepatobiliary & Pancreas | Yang Seok Koh | Chonnam National University Medical School |
| | Chang Moo Kang | Yonsei University College of Medicine |
| | Hyeon Kook Lee | Ewha Womans University School of Medicine |
| Breast & Endocrine | Hai-Lin Park | CHA University College of Medicine |
| | Ku Sang Kim | Ulsan City Hospital |
| | Hoon Yub Kim | Korea University College of Medicine |
| Soft Tissue Sarcoma & Others | Jae Berm Park | Sungkyunkwan University School of Medicine |
| | Dong-Seok Han | Konkuk University School of Medicine |

Finance Committee

| | |
|-----------------|--|
| Jeong-Heum Baek | Gachon University School of Medicine |
| Moo-Jun Baek | Soon Chun Hyang University College of Medicine |
| Young-Woo Kim | National Cancer Center |
| Dong Sub Yoon | Yonsei University College of Medicine |
| In Seok Choi | Konyang University College of Medicine |
| Eun-Kyu Kim | Seoul National University College of Medicine |

Liaison & Arrangement Committee

| | |
|----------------|--|
| Hyung-Chul Kim | Soon Chun Hyang University College of Medicine |
| Jung Gu Kang | National Health Insurance Service Ilsan Hospital |
| Kwang Ho Kim | Ewha Womans University School of Medicine |
| Yong Keum Park | Chung-Ang University College of Medicine |
| Sung Su Yun | Yeungnam University College of Medicine |
| Kyung Sik Kim | Yonsei University College of Medicine |
| Kang Young Lee | Yonsei University College of Medicine |

Publication Committee

| | |
|--------------|------------------------------|
| Hang Jong Yu | Korea Cancer Center Hospital |
|--------------|------------------------------|

Overview

Title Seoul International Symposium of Surgical Oncology 2015

Theme Excellency and Harmony for Cancer Patients

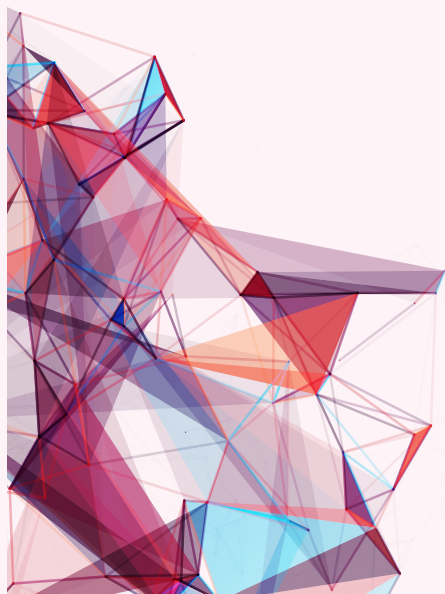
Date February 27 (Fri)-28 (Sat), 2015

Venue Vista Hall (B2), W Seoul-Walkerhill, Seoul, Korea

Hosted by Korean Society of Surgical Oncology

Official Language English

Website www.sisso2015.org, www.sisso.or.kr



SISSO 2015

Seoul International Symposium of Surgical Oncology 2015
Excellency and Harmony for Cancer Patients

Program at a glance

Vista Hall, W Seoul-Walkerhill

| | February 27 (Friday) | | February 28 (Saturday) | |
|-------|--|---|--|--|
| 8:00 | Registration | | Registration | |
| 8:30 | Oral Presentation I | Oral Presentation II | Oral Presentation III | Oral Presentation IV |
| 9:00 | | | | |
| 9:30 | Coffee Break | | Symposium VII <i>Lymph Node Dissection</i> | Symposium VIII <i>Personalized Medicine</i> |
| 10:00 | Opening Ceremony | | | |
| 10:30 | Symposium I <i>Function-Preserving Cancer Surgery</i> | Symposium II <i>Hereditary Cancer</i> | Coffee Break | |
| 11:00 | | | State-of-the-Art Lecture II | |
| 11:30 | | | Poster Viewing | |
| 12:00 | Luncheon Symposium | | Luncheon Symposium | |
| 12:30 | | | | |
| 13:00 | Plenary Session I <i>Future of Surgical Oncology</i> | | Plenary Session II <i>Do We Have Enough Evidence for Robotic Surgery?</i> | Nursing Session |
| 13:30 | | | | |
| 14:00 | | | | |
| 14:30 | State-of-the-Art Lecture I | | Coffee Break | |
| 15:00 | Coffee Break | | Symposium IX <i>Quality Control for Surgical Oncology</i> | Symposium X <i>Management of Rare Cancers</i> |
| 15:30 | Symposium III <i>Sentinel Node: Where Are We?</i> | Symposium IV <i>Translational Research</i> | | |
| 16:00 | | | | |
| 16:30 | Symposium V <i>Challenges in Laparoscopic Surgery</i> | Symposium VI <i>Academic Surgeon</i> | Symposium XI <i>Role of Surgery in Stage IV Cancers</i> | Symposium XII <i>Surgical & Onco-logical Outcomes</i> |
| 17:00 | | | | |
| 17:30 | | | General Assembly of KSSO | |
| 18:00 | Welcome Reception | | Awards & Closing Ceremony | |

Medical Student Camp

SISSO 2015 Program

February 27 (Fri), 2015

| | | |
|-------------|--|---|
| 08:00~08:30 | Registration | |
| 08:30~09:30 | Oral Presentation I | Chairs : Dong-Seok Han (Konkuk Univ., Korea) Kee-Hyun Nam (Yonsei Univ., Korea) |
| 08:30~09:30 | Oral Presentation II | Chairs : Hyeong-Gon Moon (Seoul National Univ., Korea) Sungho Jo (Dankook Univ., Korea) |
| 09:30~10:00 | Coffee Break | |
| 10:00~10:30 | Opening Ceremony | |
| 10:30~12:00 | Symposium I : Function-Preserving Cancer Surgery | Chairs : Jae-Bok Lee (Korea Univ., Korea) Chang Sik Yu (Univ. of Ulsan, Korea) |
| 10:30~10:50 | Gastric Cancer Surgery | Kazuyuki Kojima (Tokyo Medical and Dental Univ., Japan) |
| 10:50~11:10 | Colorectal Cancer Surgery | Jun Won Um (Korea Univ., Korea) |
| 11:10~11:30 | Thyroid Cancer Surgery | Gianlorenzo Dionigi (Univ. of Insubria, Italy) |
| 11:30~11:50 | HBP Cancer Surgery | Sung-Sik Han (National Cancer Center, Korea) |
| 11:50~12:00 | Q&A | |
| 10:30~12:00 | Symposium II : Hereditary Cancer | Chairs: Ku Sang Kim (Ulsan City Hospital, Korea) Young-Joon Lee (Gyeongsang National Univ., Korea) |
| 10:30~10:50 | Breast Cancer | Hideko Yamauchi (St. Luke's International Hosp., Japan) |
| 10:50~11:10 | Stomach Cancer | Kyoung-Mee Kim (Sungkyunkwan Univ., Korea) |
| 11:10~11:30 | Colorectal Cancer | Duck-Woo Kim (Seoul National Univ., Korea) |
| 11:30~11:50 | Thyroid Cancer | Kyu Eun Lee (Seoul National Univ., Korea) |
| 11:50~12:00 | Q&A | |
| 12:00~13:00 | Luncheon Symposium I | Ichiro Uyama (Fujita Health Univ., Japan) |
| 13:00~14:20 | Plenary Session I : Future of Surgical Oncology | Chairs : Ho-Kyung Chun (President of KSSO) Yuko Kitagawa (Vice Chair of JSCO) |
| 13:00~13:20 | SSO | Ronald Weigel (President of SSO) |
| 13:20~13:40 | The Future of Surgical Oncology : the ESSO Viewpoint | Riccardo Audisio (President of ESSO) |
| 13:40~14:00 | JSCO | Yuko Kitagawa (Vice Chair of JSCO) |
| 14:00~14:20 | KSSO | Ho-Seong Han (Chairman of KSSO) |

| | | |
|-------------|--|--|
| 14:20~15:00 | State-of-the-Art Lecture I | Chair : Han-Kwang Yang (Seoul National Univ., Korea) |
| | Genomics in 21st Century | Charles Lee (The Jackson Lab. for Genomic Medicine, USA) |
| 15:00~15:30 | Coffee Break | |
| 15:30~16:30 | Symposium III : Sentinel Node: Where Are We? | Chairs : Hai-Lin Park (CHA Univ., Korea) Yong Keum Park (Chung-Ang Univ., Korea) |
| 15:30~15:45 | ROLL (radio-isotope-guided) Surgery for Non-Palpable Breast Cancer | Riccardo Audisio (Univ. of Liverpool, UK) |
| 15:45~16:00 | Breast Cancer | Jin Hyang Jung (Kyungpook National Univ., Korea) |
| 16:00~16:15 | Stomach Cancer | Yuko Kitagawa (Keio Univ., Japan) |
| 16:15~16:30 | Colorectal Cancer | Jun Seok Park (Kyungpook National Univ., Korea) |
| 15:30~16:30 | Symposium IV : Translational Research | Chairs : Jeong Hwan Yook (Univ. of Ulsan, Korea) Kyung Sik Kim (Yonsei Univ., Korea) |
| 15:30~15:45 | Stomach | Sam Yoon (Memorial Sloan-Kettering Cancer Center, USA) |
| 15:45~16:00 | Colorectal | Moo Jun Baek (Soonchunhyang Univ., Korea) |
| 16:00~16:15 | HBP | Dong Ho Choi (Hanyang Univ., Korea) |
| 16:15~16:30 | Breast | Hyeong-Gon Moon (Seoul National Univ., Korea) |
| 16:30~17:50 | Symposium V : Challenges in Laparoscopic Surgery | Chars : Yang Seok Koh (Chonnam National Univ., Korea) Kwang Ho Kim (Ewha Womans Univ., Korea) |
| 16:30~16:50 | Challenges in Laparoscopic GI Surgery | Jeffrey Drebin (Univ. of Pennsylvania, USA) |
| 16:50~17:10 | Single Port Gastrectomy for Gastric Cancer | Sang-Hun Ahn (Seoul National Univ., Korea) |
| 17:10~17:30 | Colorectal | Seong-Hyeon Yun (Sungkyunkwan Univ., Korea) |
| 17:30~17:50 | HBP | Young Kyoung You (The Catholic Univ., Korea) |
| 16:30~17:50 | Symposium VI : Academic Surgeon | Chars : Cho Hyun Park (The Catholic Univ., Korea) Hyung Chul Kim (Suncheonhyang Univ., Korea) |
| 16:30~16:50 | Academic Surgeon in U.S.A. | Ronald Weigel (Univ. of Iowa Carver., USA) |
| 16:50~17:10 | Research Proposal | Young-Woo Kim (National Cancer Center, Korea) |
| 17:10~17:30 | Clinical Trial | Ji Won Park (Seoul National Univ., Korea) |
| 17:30~17:50 | Surgeon Fatigue and Burnout | Jeong-Ho Seok (Yonsei Univ., Korea) |
| 16:30~17:30 | Medical Student Camp | Chair : Do Joong Park (Seoul National Univ., Korea) |
| 18:30~ | Welcome Reception | |

SISSO 2015 Program

February 28 (Sat), 2015

| | | |
|-------------|--|---|
| 08:00~08:30 | Registration | |
| 08:30~09:30 | Oral Presentation III | Chairs : In Seok Choi (Konyang Univ., Korea) Hong-Jin Kim (Yeungnam Univ., Korea) |
| 08:30~09:30 | Oral Presentation IV | Chairs : Jeong-Heum Baek (Gachon Univ., Korea) Beom Gyu Kim (Chung-Ang Univ., Korea) |
| 09:30~10:30 | Symposium VII : Lymph Node Dissection | Chairs : Chang Moo Kang (Yonsei Univ., Korea) Jae-Moon Bae (Sungkyunkwan Univ., Korea) |
| 09:30~09:50 | Stomach | Hong Man Yoon (National Cancer Center, Korea) |
| 09:50~10:10 | Colorectal | In Kyu Lee (The Catholic Univ., Korea) |
| 10:10~10:30 | HBP | Jae Hoon Lee (Univ. of Ulsan, Korea) |
| 09:30~10:30 | Symposium VIII : Personalized Medicine | Chairs : Dong-Guk Park (Dankook Univ., Korea) Lee Su Kim (Hallym Univ., Korea) |
| 09:30~09:50 | Targeted Therapy | Su-Jeong Kim (Roche Korea Co., Ltd., Korea) |
| 09:50~10:10 | PDX Model | Dong Hoon Shin (National Cancer Center, Korea) |
| 10:10~10:30 | Cancer Genome | Charles Lee (The Jackson Laboratory for Genomic Medicine, USA) |
| 10:30~11:00 | Coffee Break | |
| 11:00~11:40 | State-of-the-Art Lecture II | Chair : Ho-Seong Han (Seoul National Univ., Korea) |
| | Monitoring of Complications in General Surgery | Mikael Lesurtel (University Hospital Zurich, Switzerland) |
| 11:40~12:10 | Poster Viewing | |
| 12:10~13:10 | Luncheon Symposium II | |

| | | |
|-------------|---|--|
| 13:10~14:30 | Plenary Session II : Do We Have Enough Evidence for Robotic Surgery? (Language : Korean) | Chairs : Dong Heon Kim (Pusan National Univ., Korea) Jun-Gi Kim (The Catholic Univ., Korea) |
| | Considerations for Introducing New Health Technology to Clinical Practice | Byung Joo Park (Seoul National Univ., Korea) |
| | Stomach : Pros | Woo Jin Hyung (Yonsei Univ., Korea) |
| | Stomach : Cons | Sung-Soo Park (Korea Univ., Korea) |
| | Colorectal : Pros | Jin Kim (Korea Univ., Korea) |
| | Colorectal : Cons | Hyeong Rok Kim (Chonnam National Univ., Korea) |
| | Thyroid : Pros | June Young Choi (Seoul National Univ., Korea) |
| | Thyroid : Cons | Jun-Ho Choe (Sungkyunkwan Univ., Korea) |

| | | |
|-------------|---|--|
| 13:10~14:30 | Nursing Session (Language : Korean) | Chairs: Moon-Won Yoo (Univ. of Ulsan, Korea) Hyun Jung Lee (Seoul National University Hospital, Korea) |
| 13:10~13:25 | Education for Cancer Patient | |
| 13:25~13:40 | Education for Cancer Patient | Yoon Jin Lee (Severance Hospital, Korea) |
| 13:40~13:55 | Coordinator role in Cancer Center | Hyun Jung Lee (Samsung Medical Center, Korea) |
| 13:55~14:10 | Coordinator role in Cancer Center | So Yong Park (Seoul National University Hospital, Korea) |
| 14:10~14:30 | Delivering Bad News | Mi Yong Kim (National Cancer Center, Korea) |
| 14:30~15:00 | Coffee Break | |
| 15:00~16:00 | Symposium IX : Quality Control for Surgical Oncology | Chairs : Sung-Burn Kang (Seoul National Univ., Korea) Dong-Sup Yoon (Yonsei Univ., Korea) |
| 15:00~15:20 | Gastric Cancer Surgery | Seong Ho Choi (Yonsei Univ., Korea) |
| 15:20~15:40 | HBP Cancer Surgery | Mickael Lesurtel (University Hospital of Zurich, Switzerland) |
| 15:40~16:00 | Colorectal Cancer Surgery | Vijay Khatri (Univ. of California Davis School of Medicine, USA) |
| 15:00~16:00 | Symposium X : Management of Rare Cancers | Chairs : Sung Joo Kim (Sungkyunkwan Univ., Korea) Sam Yoon (Memorial Sloan-Kettering Cancer Center, USA) |
| 15:00~15:20 | Sarcoma | Sam Yoon (Memorial Sloan-Kettering Cancer Center, USA) |
| 15:20~15:40 | GIST | Toshirou Nishida (National Cancer Center Hosp. East, Japan) |
| 15:40~16:00 | Melanoma | Dong-Youn Lee (Sungkyunkwan Univ., Korea) |
| 16:00~17:00 | Symposium XI : Role of Surgery in Stage IV Cancers | Chairs : Hyeon Kook Lee (Ewha Womans Univ., Korea) Hang Jong Yu (Korea Institute of Radiological and Medical Sciences, Korea) |
| 16:00~16:15 | Colorectal | Jung Wook Huh (Sungkyunkwan Univ., Korea) |
| 16:15~16:30 | Liver | William Sharr (Univ. of Hong Kong, China) |
| 16:30~16:45 | Breast and Endocrine | Hang-Seok Chang (Yonsei Univ., Korea) |
| 16:45~17:00 | Stomach | Dong-Seok Han (Konkuk Univ., Korea) |
| 16:00~17:00 | Symposium XII : Surgical & Oncological Outcomes | Chairs : Dong-Wook Choi (Sungkyunkwan Univ., Korea) Do Joong Park (Seoul National Univ., Korea) |
| 16:00~16:20 | Complications | Suk-Hwan Lee (Kyung Hee Univ., Korea) |
| 16:20~16:40 | Reducing Complications and Improving Outcomes in Pancreas Surgery | Jeffrey Drebin (Univ. of Pennsylvania, USA) |
| 16:40~17:00 | Normogram | Byung Ho Nam (National Cancer Center, Korea) |
| 17:00~17:30 | General Assembly of KSSO | |
| 17:30 | Awards & Closing Ceremony | |

Registration

All Participants are requested to register via online system.

Participants are encouraged to register as early as possible to take advantage of discounted registration fee.

Registration Fee

| Category | | Regular Registration (By February 7, 2015) | On-site Registration (After February 8, 2015) |
|---|------------|---|--|
| Invited Speaker/Chair/ Organizing Committee | | Free | |
| Doctor | Member | KRW 110,000 | KRW 130,000 |
| | Non-member | KRW 130,000 | KRW 150,000 |
| Fellow / Resident / Nurse / Accompanying Person | | KRW 60,000 | KRW 70,000 |
| Exhibitor | | KRW 130,000 | KRW 150,000 |

Registration fee waiver: students, foreign trainees and the KSSO member of age 65 or older.

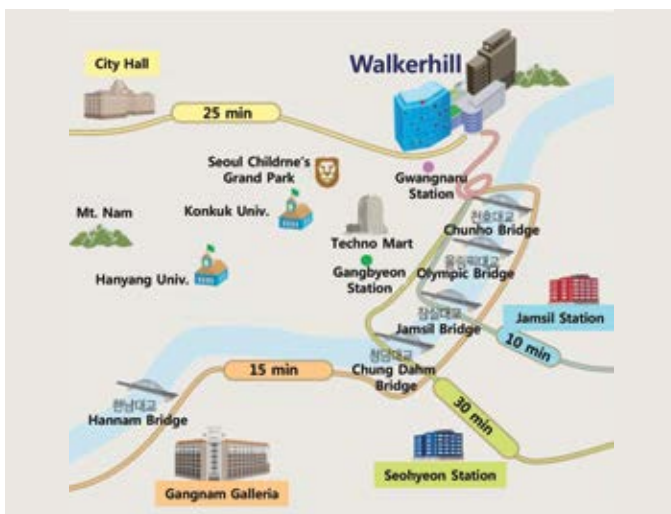
연수평점안내: 대한의사협회 12점

Venue

W Seoul-Walkerhill

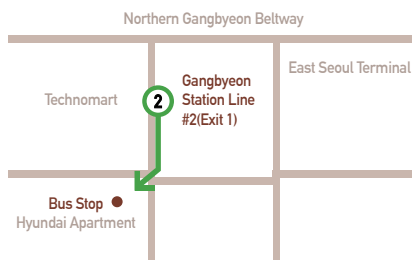
Address 177 Walkerhill-ro,Gwangjin-GuSeoul,143-708 Korea
Tel +82-2-406-2222

Directions to Walkerhill

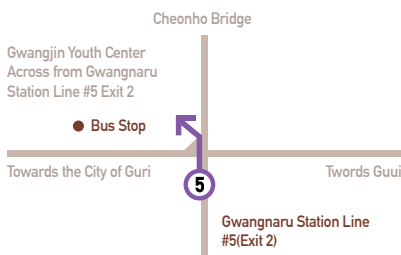


Free Shuttlebus

Gangbyun Station #2



Gwangnanu Station #5



Departure from Hotel Schedule: 6 AM-11:20 PM (10 Minute intervals)

Course : Gwangnanu Station #5 – Gangbyun Station #2 – Geangin Youth Center(Across from Gwangnanu Station Line #5 Exit 2)